



reflections on parenting and
the power of developmental
relationships

Nia House Learning Center
March 13, 2024

YOU ARE YOUR CHILD'S FIRST TEACHER

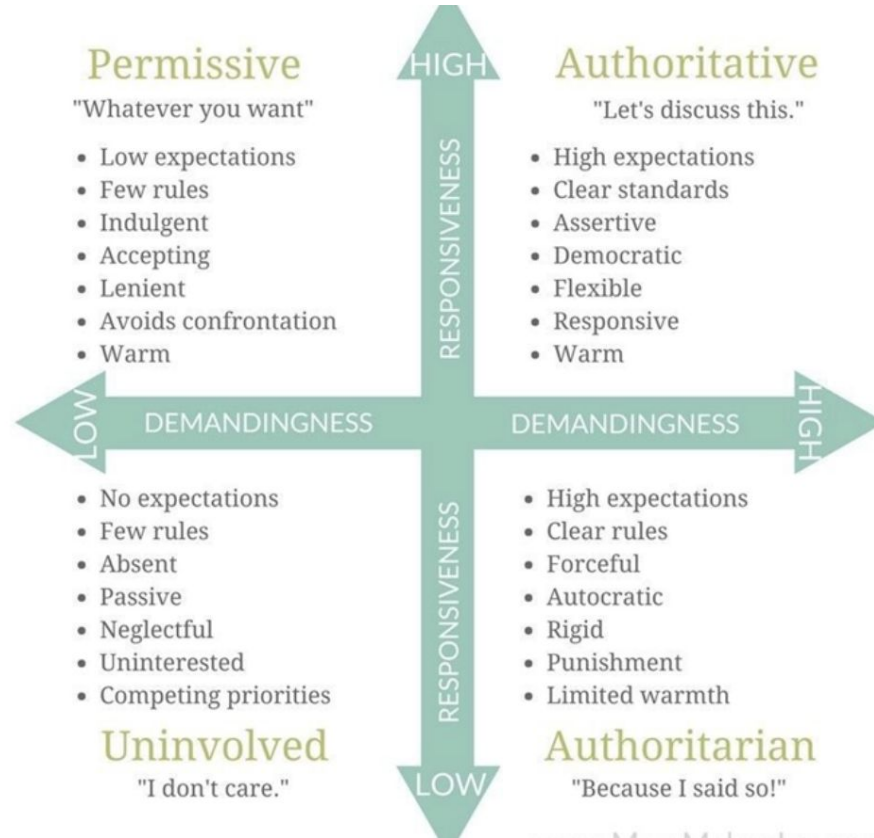
the relationships children learn at home guide their peer relationships and their learning at school.

SCENARIOS FOR REFLECTION

what do you often do?



An ever-evolving spectrum of parenting.....



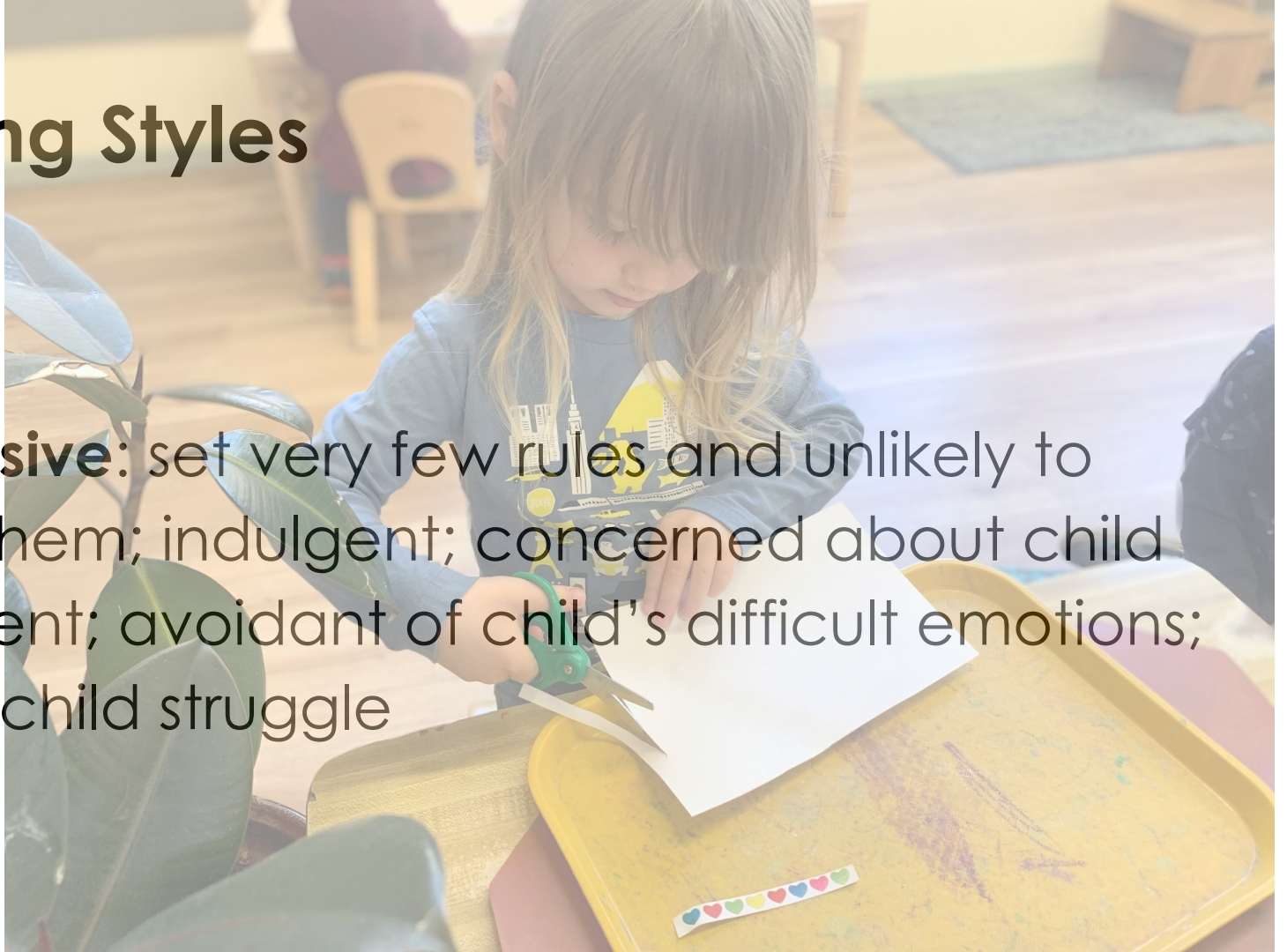
Parenting Styles

A group of children and an adult are sitting on a green lawn in a park-like setting. In the foreground, a young girl with dark hair and a blue headband is seen from behind, wearing a grey hoodie and striped leggings. To her left, a child in a yellow shirt is also seen from behind. In the background, a woman in a grey hoodie is looking towards the camera, and another child in a white shirt is standing. The scene is outdoors with trees and a fence in the distance.

1. **Authoritarian:** Rules are in place that may lack reason or explanation; little to no room for collaboration between parent and child; reactive rather than responsive; mistakes come with punishment

Parenting Styles

2. **Permissive**: set very few rules and unlikely to enforce them; indulgent; concerned about child liking parent; avoidant of child's difficult emotions; won't let child struggle



Parenting Styles

A young child with dark hair, wearing a light-colored long-sleeved shirt with a pattern of small cartoon characters, is sitting at a wooden desk in a classroom. The child is focused on writing on a piece of lined paper with a yellow pencil. In the background, another child in a red shirt is sitting at a desk, looking towards the camera. The room has large windows and other children are visible in the distance.

3. **Neglect/ uninvolved:** shows little to no guidance/ coaching; has low expectations; lack of family leadership and little interest in sharing social and life skills; little to no boundaries; offers little emotional guidance/ support

Parenting Styles

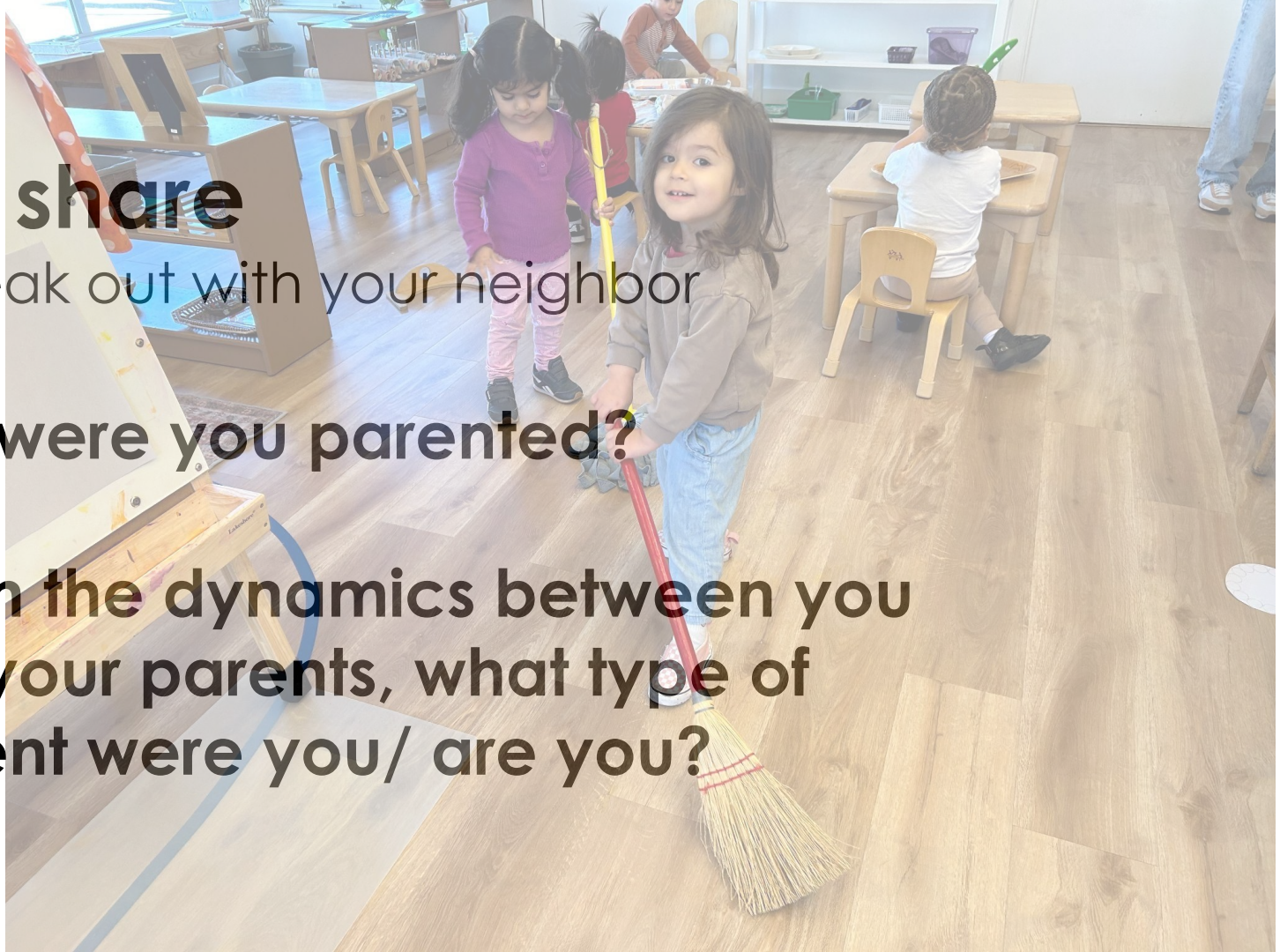


4. **Authoritative:** Parenting that is nurturing, responsive and supportive, yet sets firm limits for children; guide children by explaining rules, discussing and reasoning; collaboration; consider child's perspective/ viewpoint

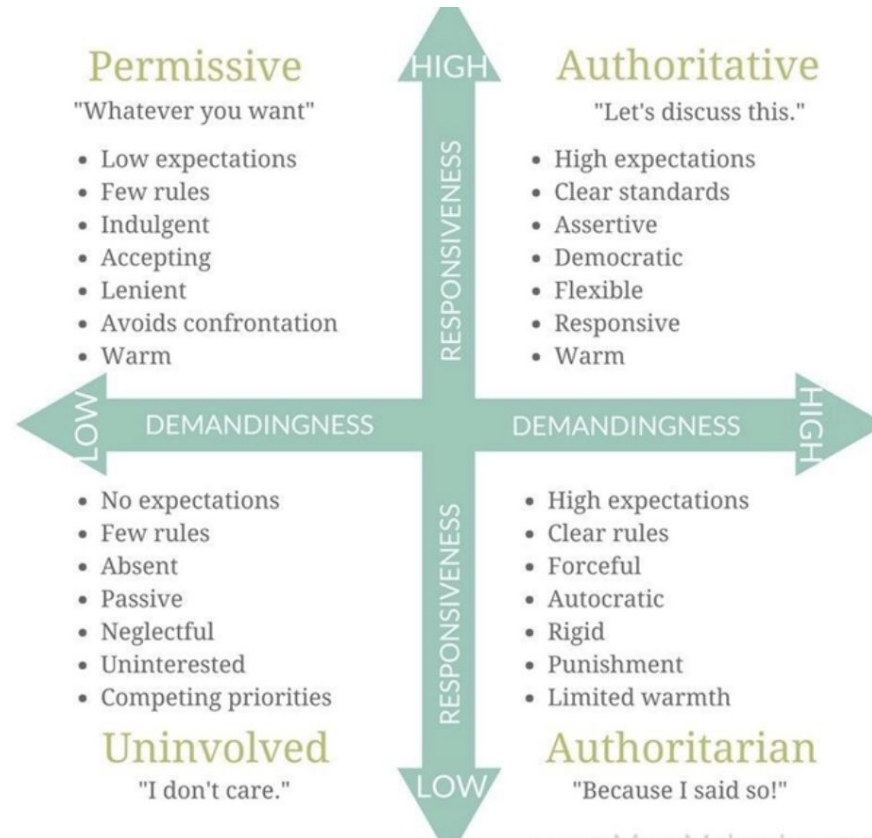
pair + share

4 min break out with your neighbor

- **How were you parented?**
- **Given the dynamics between you and your parents, what type of student were you/ are you?**



A brainstorm: risks associated with parenting styles

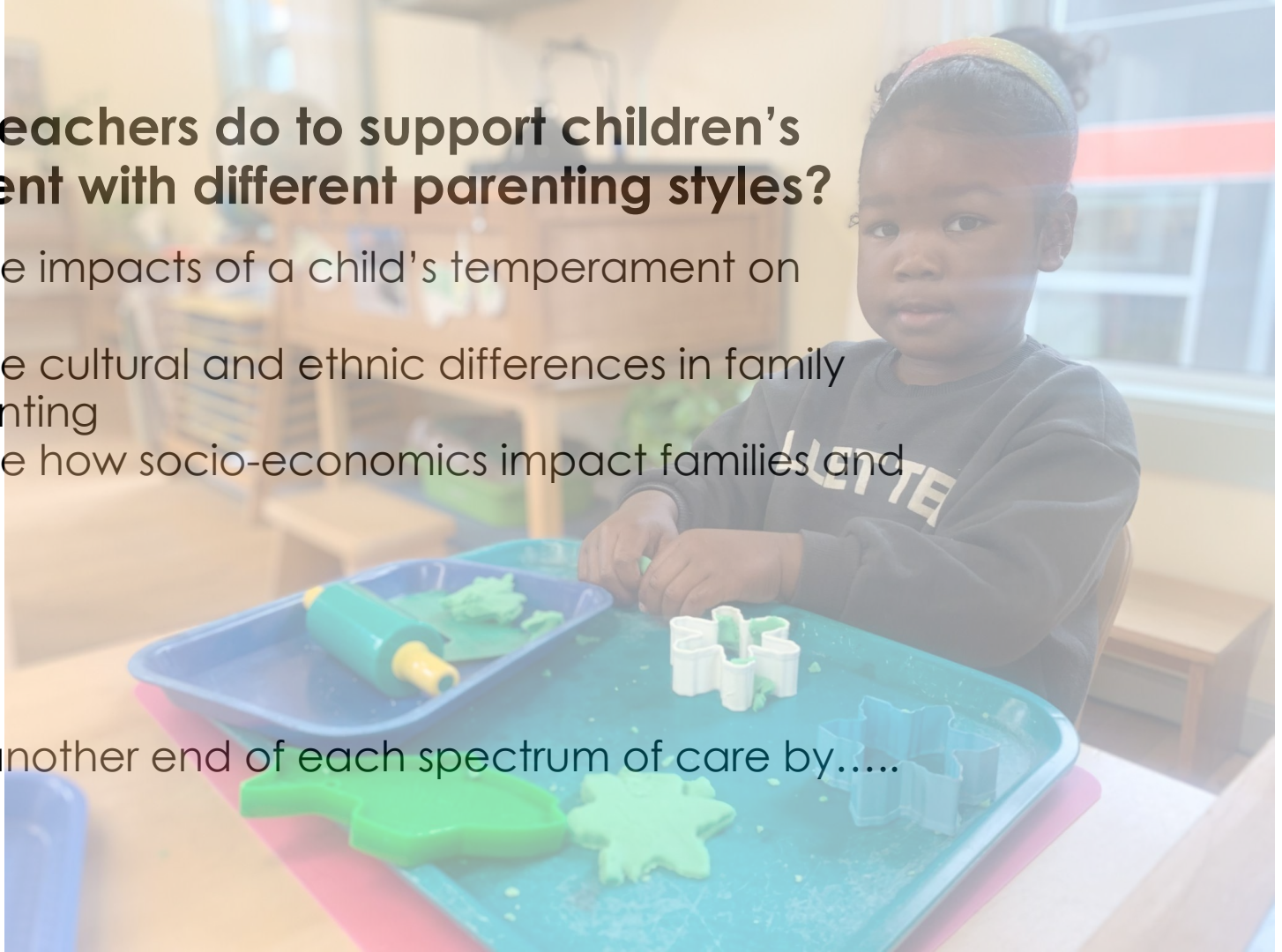


What can teachers do to support children's development with different parenting styles?

- Recognize impacts of a child's temperament on family life
- Recognize cultural and ethnic differences in family life/ parenting
- Recognize how socio-economics impact families and lifestyles

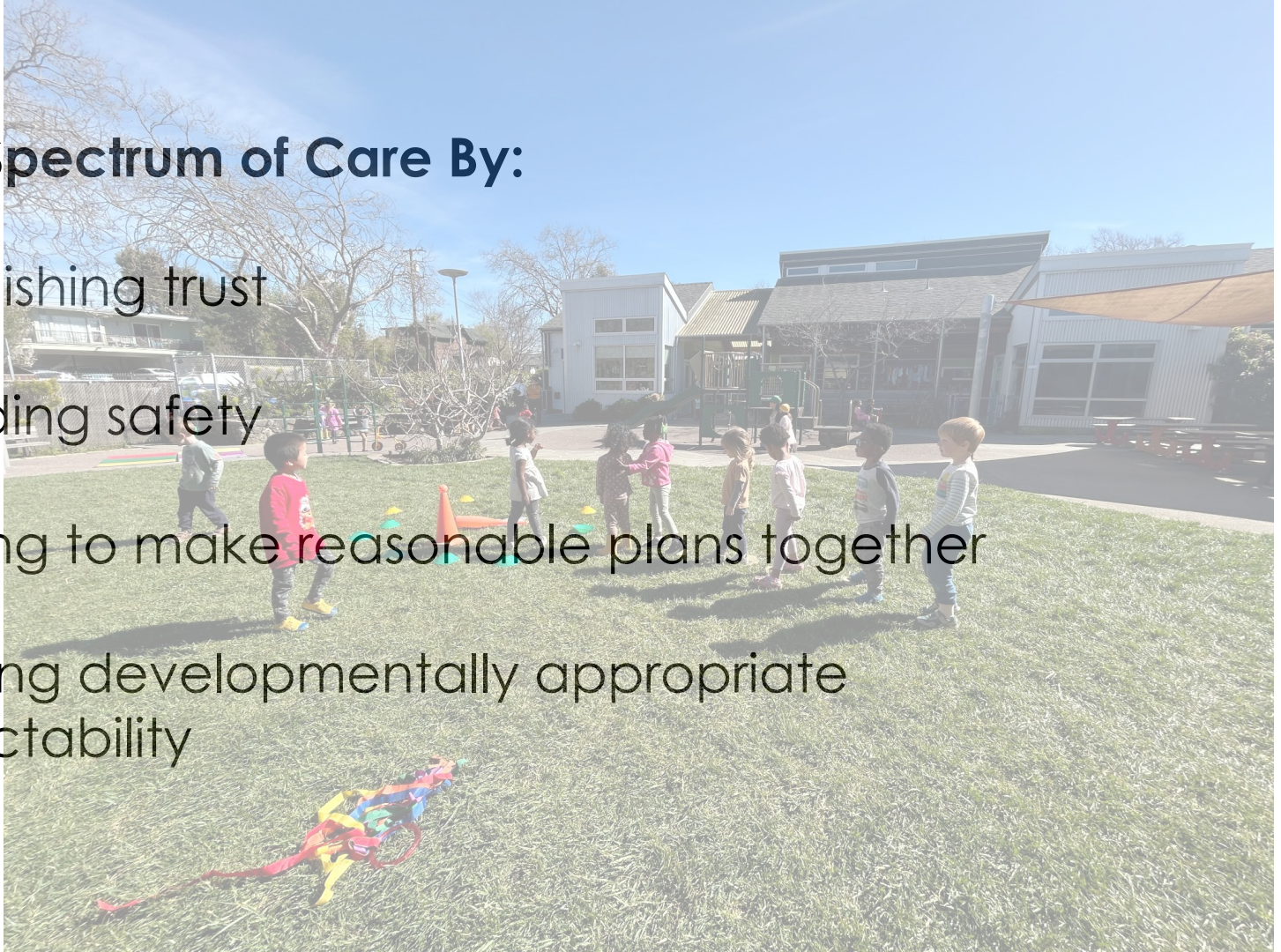
Then...

- Provide another end of each spectrum of care by.....



Provide Spectrum of Care By:

- Establishing trust
- Providing safety
- Helping to make reasonable plans together
- Offering developmentally appropriate predictability



MODEL

for all children with all parenting styles:

Regulate

{fight, flight, freeze, due to stress, anger, fear, frustration}

Relate

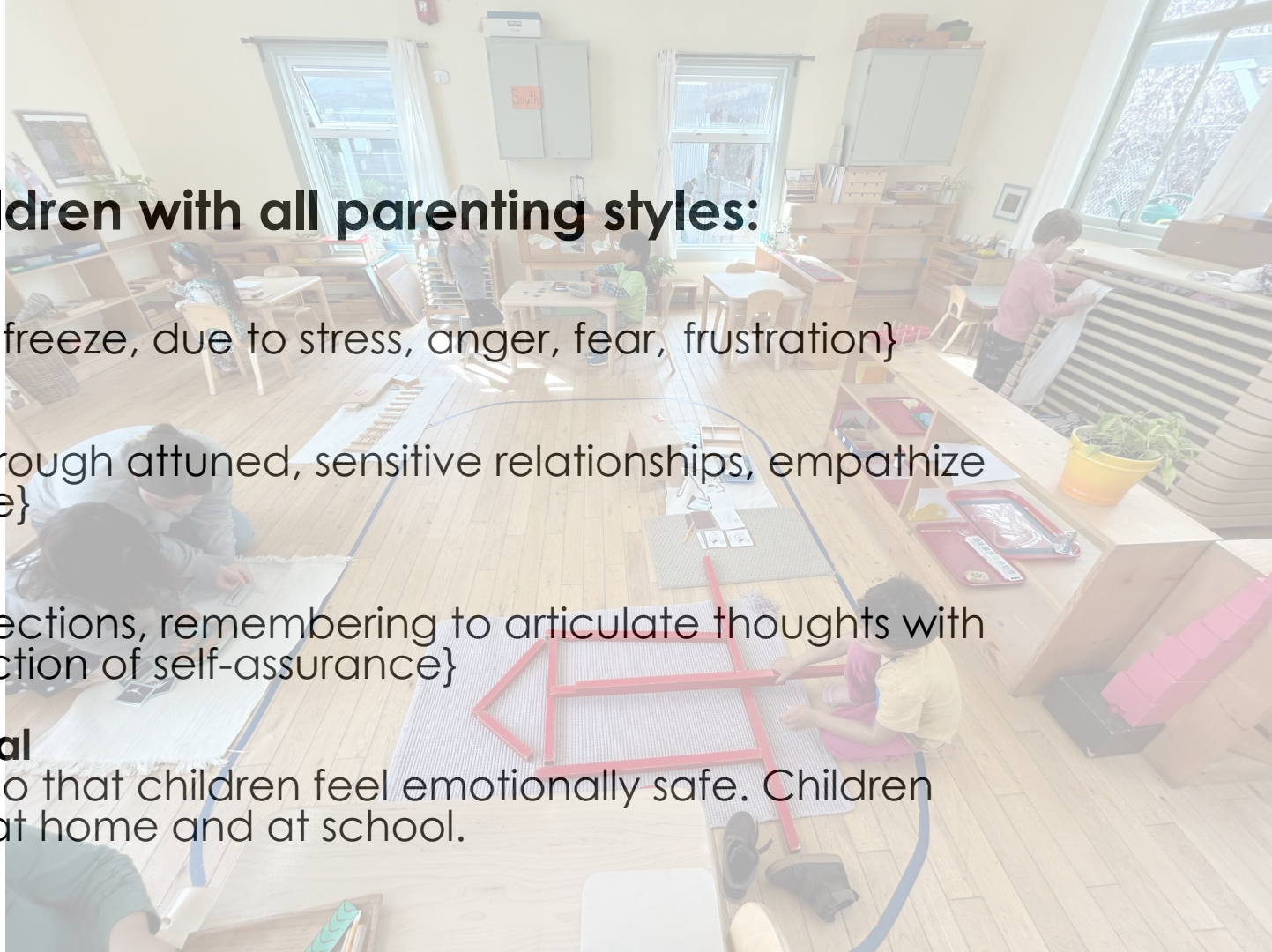
{connect through attuned, sensitive relationships, empathize and validate}

Reason

{calm connections, remembering to articulate thoughts with words, reflection of self-assurance}

Ultimate Goal

Share tools so that children feel emotionally safe. Children access this at home and at school.





**Relationships in kids' lives are like
the roots of a tree.....**

-Kent Pekel

A photograph of four young children sitting on a wooden planter box in a garden. They are playing with various toy trucks, including a yellow one, a green one, and a red one. The children are dressed in colorful jackets and pants. The background shows a wooden fence and some plants. The text "Listening session with Kent Pekel:" is overlaid on the top part of the image in a teal color.

Listening session with Kent Pekel:

The deep value of
developmental relationships



Developmental Relationships:

1. **Express Care**- people don't know unless I share
2. **Challenge Growth**- establish/ encourage growth mindset/ trust
3. **Provide Support**- you're not on your own/ we'll help scaffold for your growth
4. **Share Power**
5. **Expand Possibilities!**

Conclusion

a practical relationship based tool-
practice!

4s's

Sparks

Strengths

Struggles

Supports





THANK
YOU
TEACHERS!